

# UT-75

## DATI TECNICI

# Max-Air TECHNOLOGY

# UT-76

## TECHNICAL DATA

CORRISPONDENTE ALLE NORME

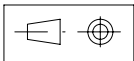
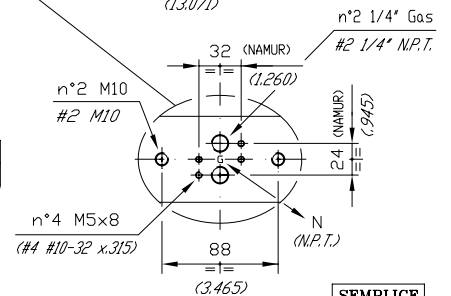
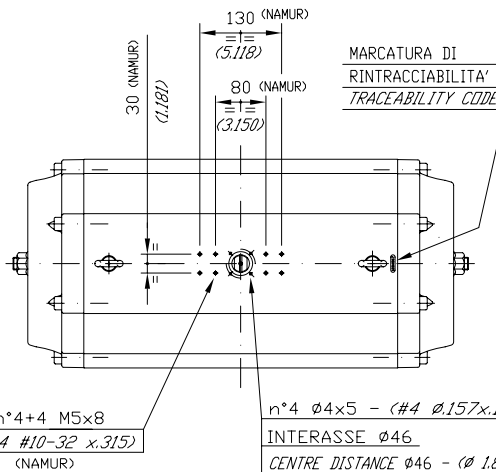
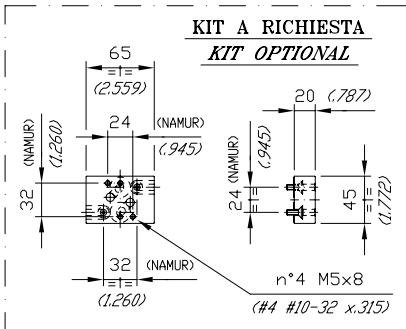
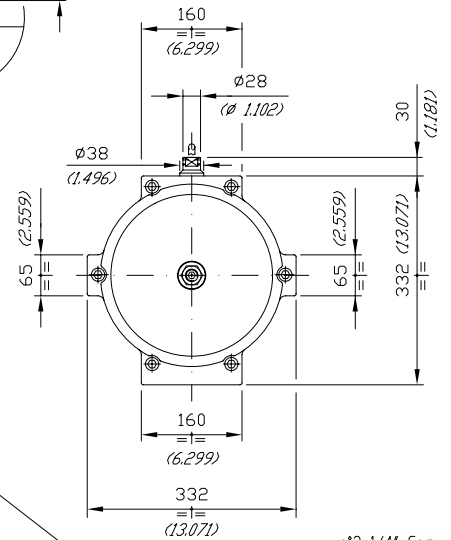
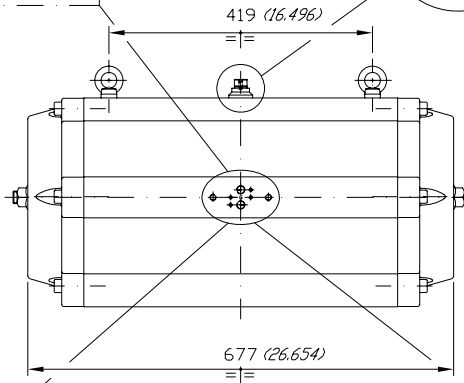
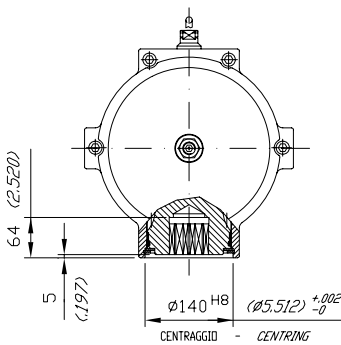
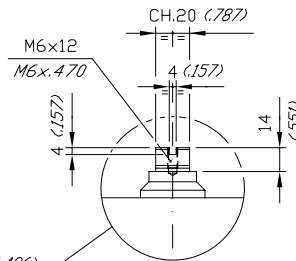
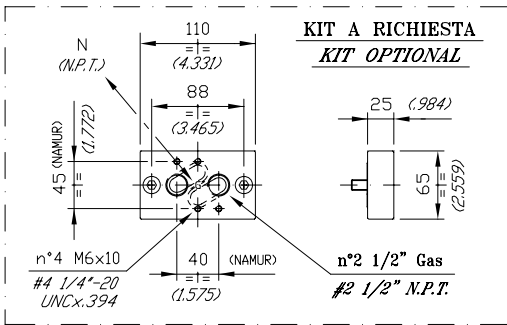
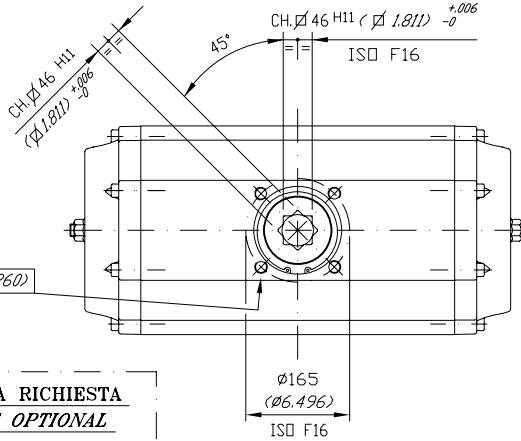
ISO 5211 - DIN 3337

E NAMUR VDI / VDE 3845

DIMENSIONS TO

ISO 5211 - DIN 3337

AND NAMUR VDI / VDE 3845



DIMENSIONI IN mm.

DIMENSIONS IN mm. (INCHES)

MARCATURA DI RINTRACCIABILITA' TRACEABILITY CODE

		SEMPLICE EFFETTO 8+8 MOLLE
		DOUBLE RETURN 8+8 SPRING

		SEMPLICE EFFETTO 8+8 MOLLE	DOUBLE RETURN 8+8 SPRING
UT75 x 90°		81,600	98,000
UT76 x 90°		179.90	216.05
PESI	Kg.		
WEIGHT	LB.		
CONSUMI ARIA	N. Lt.	31,400	11,700
AIR CONSUMPTION	CU.-IN.	1962,5	731,25

# UT-75

## VALORI DI COPPIA in "Nm" TORQUE VALUES in "Nm"

### DOPPIO EFFETTO DOUBLE ACTING

100 kPa = 1 Bar

100 kPa	200 kPa	300 kPa	400 kPa	500 kPa	562 kPa	600 kPa	700 kPa	800 kPa
634	1268	1903	2537	3171	3564	3805	4439	5074

### SEMPLICE EFFETTO 90° SPRING RETURN 90°

100 kPa = 1 Bar

POS. 1 COPPIA DI CHIUSURA (RITORNO MOLLE) POS. 1 CLOSING TORQUE (SPRING)		POS. 2 - COPPIA DI APERTURA - POS. 2 - OPENING TORQUE																
		200 kPa		300 kPa		400 kPa		500 kPa		562 kPa		600 kPa		700 kPa		800 kPa		
N° MOLLE # SPRINGS	START	END	START	END	START	END	START	END	START	END	START	END	START	END	START	END	START	END
1+1	321	201	1067	947	1702	1582	2336	2216	2970	2850	3363	3243	3604	3484	4238	4118	4873	4753
2+2	642	403	865	626	1500	1261	2134	1895	2768	2529	3161	2922	3402	3163	4036	3797	4671	4432
3+3	963	604	664	305	1299	940	1933	1574	2567	2208	2960	2601	3201	2842	3835	3476	4470	4111
4+4	1284	805	--	--	1098	619	1732	1253	2366	1887	2759	2280	3000	2521	3634	3155	4269	3790
5+5	1604	1007	--	--	--	--	1530	933	2164	1567	2557	1960	2798	2201	3432	2835	4067	3470
6+6	1925	1208	--	--	--	--	1329	612	1963	1246	2356	1639	2597	1880	3231	2514	3866	3149
7+7	2246	1410	--	--	--	--	--	--	1761	925	2154	1318	2395	1559	3029	2193	3664	2828
8+8	2567	1611	--	--	--	--	--	--	1560	604	1953	997	2194	1238	2828	1872	3463	2507

# UT-76

## TORQUE VALUES in "IN.LB"

SPRING RETURN 90°

### DOUBLE ACTING

40 PSIG	15750
60 PSIG	23625
80 PSIG	31500
100 PSIG	39375
120 PSIG	47250

# SPRINGS	POS. 1 CLOSING TORQUE (SPRING)		POS. 2 - OPENING TORQUE									
	START	END	40 PSIG		60 PSIG		80 PSIG		100 PSIG		120 PSIG	
1+1	2843	1784	13966	12907	21841	20782	29716	28657	37591	36532	45466	44407
2+2	5686	3569	12181	10064	20056	17939	27931	25814	35806	33689	43681	41564
3+3	8530	5353	10397	7220	18272	15095	26147	22970	34022	30845	41897	38720
4+4	11373	7137	8613	4377	16488	12252	24363	20127	32238	28002	40113	35877
5+5	14216	8922	--	--	14703	9409	22578	17284	30453	25159	38328	33034
6+6	17059	10706	--	--	12919	6566	20794	14441	28669	22316	36544	30191
7+7	19902	12490	--	--	--	--	19010	11598	26885	19473	34760	27348
8+8	22746	14275	--	--	--	--	17225	8754	25100	16629	32975	24504

